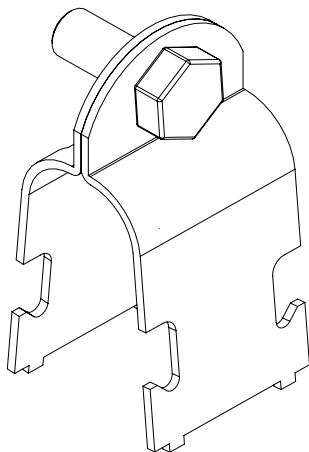


## CLAMP BFT



Models: 20, 25, 32, 40, 50.

Finishes: Electrogalvanised (EZ).

Characteristics:

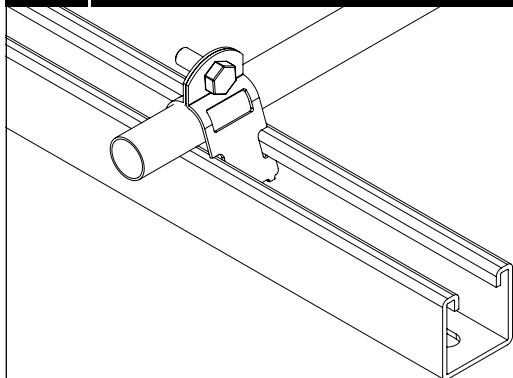
- Metallic
- Non-Flame propagating component
- Electrically conductive component
- With metallic coating. Resistance to Corrosion:

EZ: class 2

Diameter ranges:

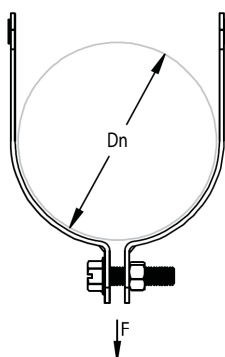
- 20: 17,9 ~ 20	- 25: 23,4 ~ 25,4	- 32: 29,5 ~ 32
- 40: 38,4 ~ 40,6	- 50: 50,3 ~ 53,7	

## ASSEMBLING INSTRUCTIONS



- Clamp BFT is used to fix conduits, pipes, or high diameter wires to any profile of 41/82 range: 41x21, 41x41 ó 82x41.
- The clamp unit include one bolt&nut required for the assembly. Therefore, additional hardware is not needed.

## SAFE WORKING LOAD



Dn	F
mm	kg
20	2000
25	2000
32	2000
40	2670
50	3780

Related products:

Profiles and accessories of BASORFIX 41/82.